

IBM 1401, A User's manual **Technical details.**

Hotel Accommodation:

Four (4) single rooms at a three star hotel are required.
Rooms shall be noise free, and contain bath.
Hotel shall provide an internet access by wifi.

Light:

See the lighting plot

Stage:

- 12m minimum between walls
- 10m between black legs
- 9m minimum front to back curtain
- height: 6 m minimum
- black dance floor on all the stage
- black curtain on the back
- 10 black legs (see the lighting plot)
- 1 little table (1m/50 cm)

- sound cables, to be used as props (module) 40x10 meters and 10x20 meters.

Sound:

PA :

Left/Centre/Right system, 3 or 4 ways, mid-hi speaker in centre, subs and mid-hi speakers each side, suited to the venue.

Speakers' amplifiers must direct the system in absence of noise and interferences in the range between 20-20.000 Hz. The system should cover the entire audience area and produce at least 110 db-spl-a at mixer position, d&b or Meyer or V-Dosc is preferred.

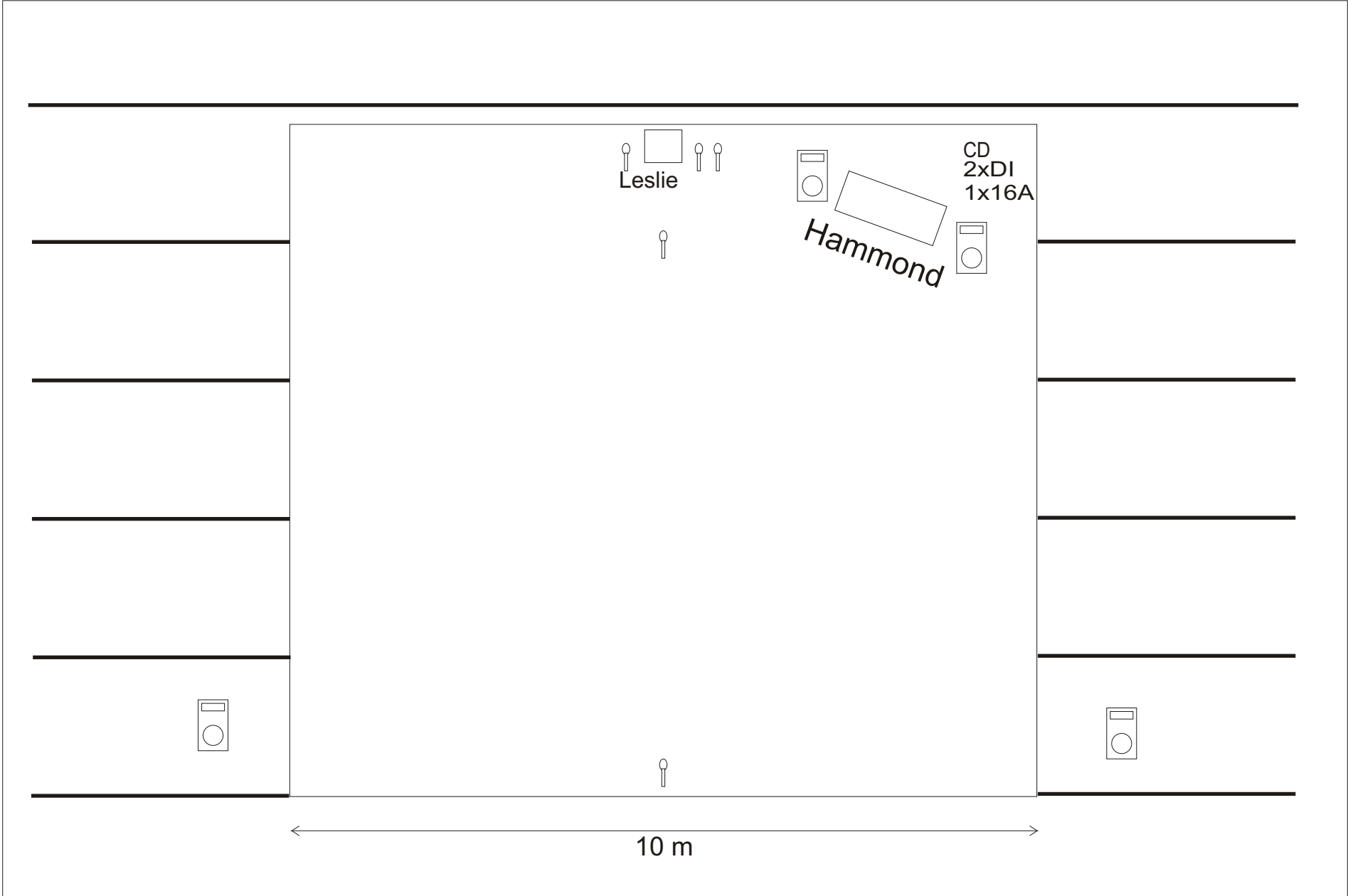
Also needed are 2 (or more) 2-way speakers (on separate amplifier channels.) mounted in back of venue. (Behind and above audience) For surround processing.

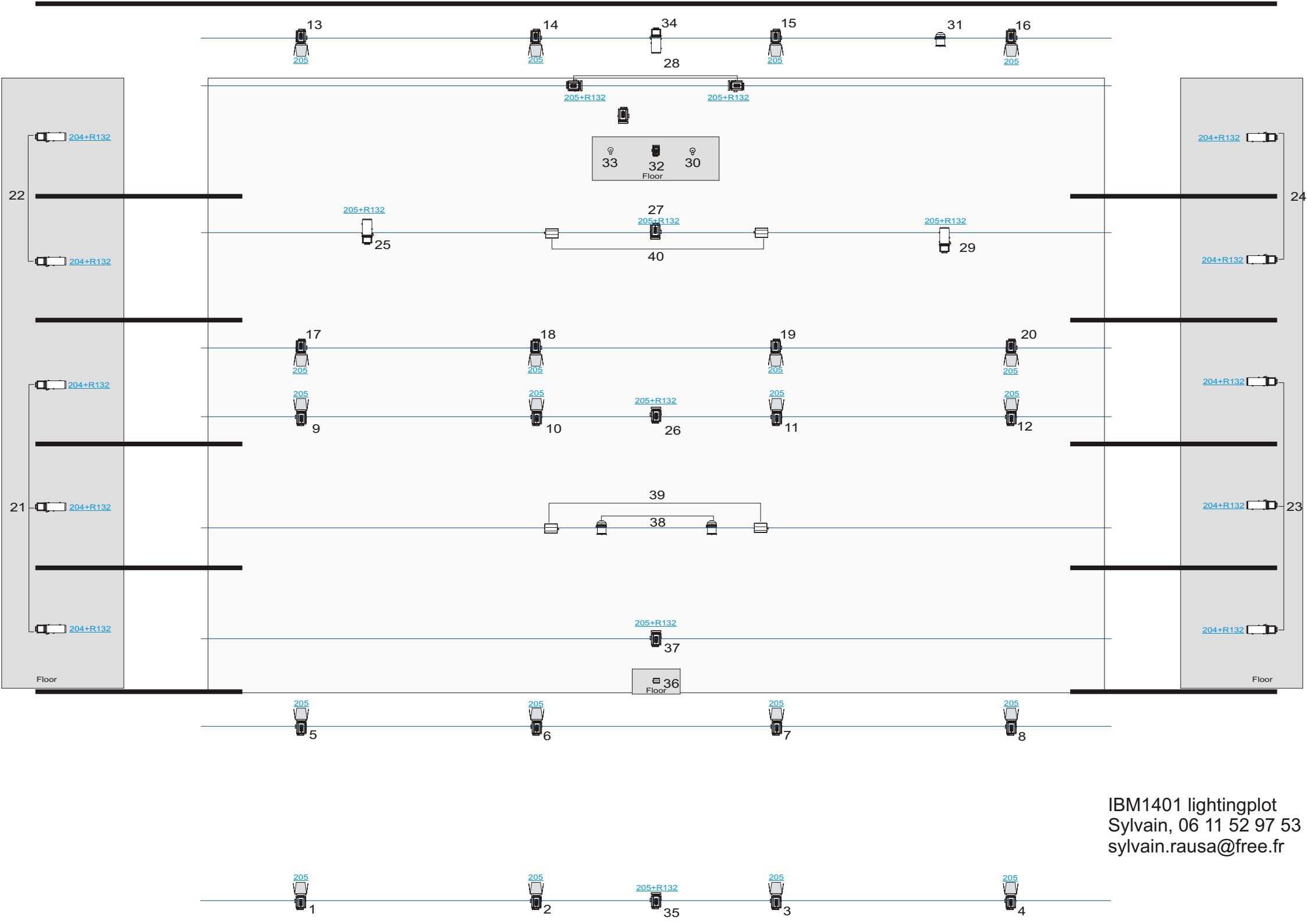
- 4 monitors, on 3 mixes from FOH (Insert EQ). (2 for the musician, 2 for the dancer).
- 2 mics for Leslie's treble (C414 or similar)
- 1 mic for Leslie's bass (421 or similar)
- 2 SM 58 (for vocals)
- 4 mic stands (2 normals, 1 small, 1 very small=10 centimeters!)
- 1 stereo DI (or two DI) picking the sound of the little mixing desk
- 1 good quality reverb (for vocals)
- 1 sound technician to mix during the show and the rehearsals

Backline:

- 1 Hammond organ
Must have a ¼ inch jack output.
Preferably model B3 or C3. L100, T100 spinets are also OK
Please note: absolutely no sampled Hammonds as Hammond XB or Korg CX. The Hammond must have a Jack output.
- 1 Leslie speaker cabinet
Only a wooden, model 122 or 147, or similar.
Absolutely no Leslie simulators or copies.
- 1 Combo box
Adapted to the Hammond organ, to insert effects pedals between the Hammond and the Leslie. Very Important.
- 1 small 6-8 channels mixer
- 1 professional CD player, 2 jack outputs
- 1 x16A alimentation, with 8 patches

Please note the Hammond and the Leslie are used as décor and as musical instruments, so please supply one of the specified models.
Hammond, Leslie, and combo have to be checked to work together.
Please specify if the stage is inclined.
Provide towels in the shower.
Audience must be installed in 15 minutes max, The dancer begins the show hidden under the sound cables.





IBM1401 lightingplot
 Sylvain, 06 11 52 97 53
 sylvain.rausa@free.fr



2kw
Fresnel

X 20

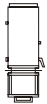
(20x Lee 205+Rosco132)



PC 1 kw

X 6

(6x lee205+rosco132)



Profile 614 Juliat

X 13

(10x lee204+rosco132
2x lee205+rosco132)



PAR CP 61

X 3



Quartz 500w

X 4

Audience light must be controled by the desk
Black dance floor.



Quartz 100w

X 1



PC 300w

X 1



80w spots

Brought by us

IBM1401 lightingplot
Sylvain, 06 11 52 97 53
sylvain.rausa@free.fr

Curtain,black legs.